

Langley Division of

**PFlow**  
Industries, Inc.

## HYDRAULIC POWER DUMPERS

Model EH-102 DP



High Level Dumper

Model EH-DP



Stationary Box Dumper

Model BD



Low Level Drum Dumper

Since 1962

**Pflow—working harder to make your job easier**

## MODEL BD Low Level Drum Dumper

### Applications

The BD dumper is a safe, low-cost, ergonomically engineered method of dumping from drums and barrels. It permits accurate control of materials and reduces spillage.

### Reliable Design, Rugged Construction

The BD drum dumper is built to provide many years of trouble free service. Positive holding, adjustable hold downs clamp all standard 30 and 55 gallon steel or fiber drums in the 10 gauge steel dumping chute.

### Configurations

Capacities range from 500 -1,500 lbs., and raise from floor level to a dumping height of 36" to 60" at 135 degree rotation.

It may be designed as a portable or as a stationary dumper.

### Hydraulic System

The BD is a single piston model using hydraulic power units specially designed and built by Pflow Industries. A heavy duty, single acting, plunger type cylinder with no internal seals make maintenance when required easier. Since all the seals are external, the cylinder can be serviced right in the dumper. The ram casing is pin mounted to permit self alignment, reducing side strain and minimizing unbalanced packing wear. A bronze gland nut provides for external packing adjustment. Packing sets are designed to adequately handle the full range of pressures and to provide long wear with excellent leak proof qualities.

### Controls

Up-down deadman pushbutton switches are standard. Automatic and semi-automatic dumping controls are optional, as is a remote foot switch or pushbutton when it is necessary to keep employees at a safe distance while handling liquids.

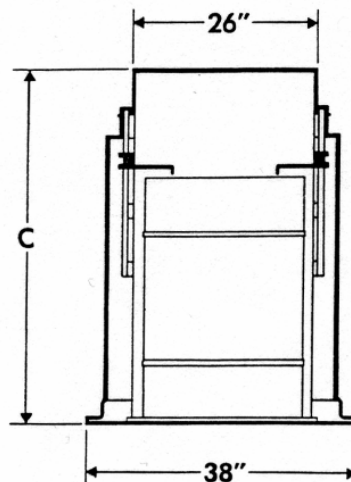
### Power

Standard power is a 115/230 V single-phase or 230/400 V three-phase 60 Hz , 1 HP TEFC motor. A battery-hydraulic system with built-in battery charger or a pneumatic-hydraulic system requiring 60 cfm at 90 PSI may be specified.

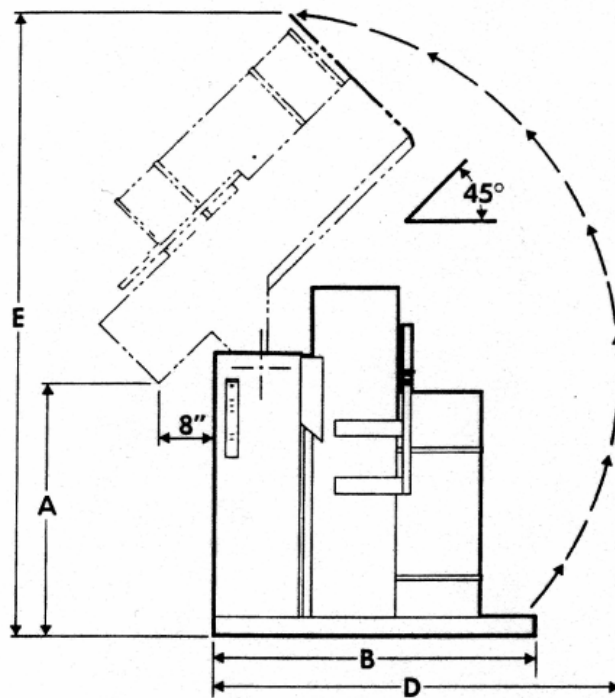
### Safety Features

All electrical motors and controls are UL listed. Controls meet NEMA enclosure codes for the appropriate operating environment such as dust, oil, indoor or outdoor use. Control enclosures can be supplied in stainless or fiberglass materials for food or chemical applications. Explosion proof enclosures meeting NEMA codes are also available.

Special expanded metal side guards may be installed around stationary models to protect the operator during dumping procedures.



Dumping Height				
A	B	C	D	E
36	45	40 1/2	57 1/4	89 1/2
42	50	46 1/2	62	100
48	55	52 1/2	67	110 1/2
54	60	58 1/2	72	121 1/2
60	65	64 1/2	77 1/4	132



**PFlow**  
Industries, Inc.

www.pflow.com  
www.langleymfg.com

Langley Division of Pflow Industries, Inc.  
6720 N. Teutonia Avenue Milwaukee, WI 53209  
Phone: 414-352-9000 - Fax: 414-352-9002

## MODEL EH 102DP High Level Power Dumper

### Applications

The EH-102DP dumper permits high level dumping of boxes, bins or totes. It can be used in integrated material management systems or as a stand alone unit.

### Reliable Design, Rugged Construction

The EH-102DP power dumper is built to provide many years of trouble free service. The standard box carriage size is 48" x 48" x 42" high. Three heavy duty, single acting, plunger type cylinders are used for lift and dump functions. Two positive holding, adjustable clamps accommodate a variety of container heights.

### Configurations

Capacities range from 500 - 3,000 lbs., and raise from floor level to a dumping height of 6' to 18' at 135 degree rotation.

### Hydraulic System

The EH-102DP is a single piston lift and double piston dump model using hydraulic power units specially designed and built by Pflow Industries. Three heavy duty, single acting, plunger type cylinders with no internal seals make maintenance when required easier. Since all the seals are external, the cylinders can be serviced right in the dumper. The ram casing is pin mounted to permit self alignment, reducing side strain and minimizing unbalanced packing wear. A bronze gland nut provides for external packing adjustment. Packing sets are designed to adequately handle the full range of pressures and to provide long wear with excellent leak proof qualities.

### Controls

Up-down deadman pushbutton switches with limit switches are standard. Automatic and semi-automatic dumping controls are optional, as is a remote foot switch or pushbutton when it is necessary to keep employees at a safe distance while handling liquids.

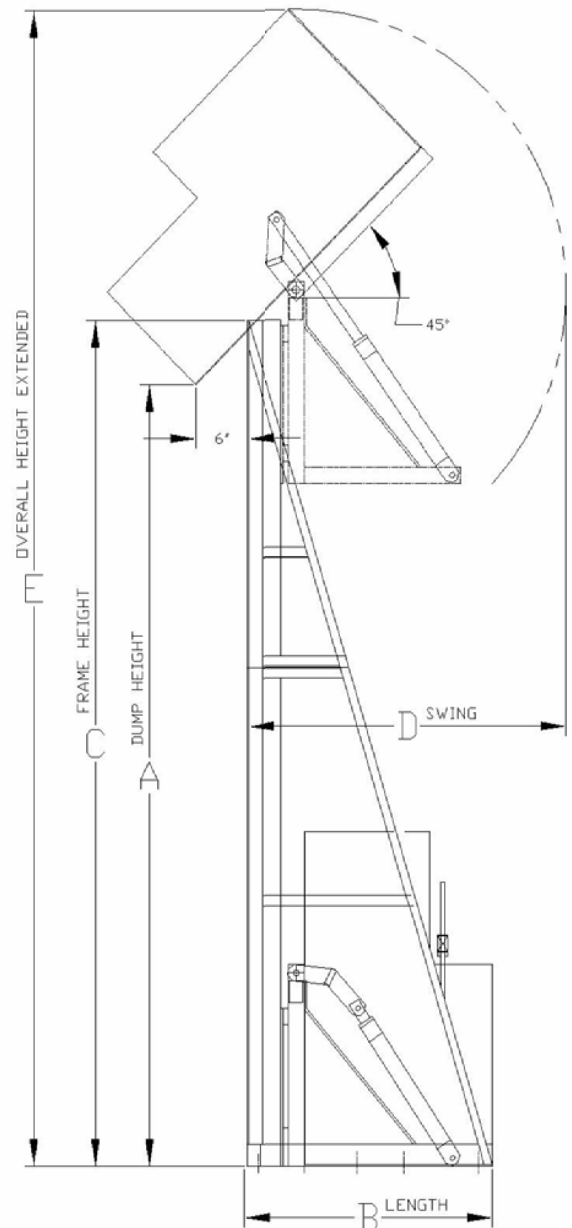
### Power

Power is 208V, 220 V or 440 V, three-phase 60 Hz motor.

### Safety Features

All electrical motors and controls are UL listed. Controls can be ordered to meet NEMA enclosure codes for the appropriate operating environment such as dust, oil, indoor or outdoor use. Control enclosures can be supplied in stainless or fiberglass materials for food or chemical applications. Explosion proof enclosures meeting NEMA codes are also available.

Special flattened expanded metal side guards with a gate may be installed around the area of the stationary models to protect the operator during dumping procedures.



Capacity	A Dump Height	B Overall Length	C Frame Height	D Swing Length	E Overall Height Extended	Overall Width With Power Unit
500  to	72"	64"	78"	88"	100"	89"
	96"	64"	102"	88"	124"	89"
	120"	64"	126"	88"	148"	89"
	144"	64"	150"	88"	172"	89"
3000	168"	64"	174"	88"	196"	89"
	192"	64"	198"	88"	220"	89"

**PFLOW**  
Industries, Inc.

www.pflow.com  
www.langleymfg.com

Langley Division of Pflow Industries, Inc.  
6720 N. Teutonia Avenue Milwaukee, WI 53209  
Phone: 414-352-9000 - Fax: 414-352-9002

## MODEL EH-DP Lo-Level Box Dumper

### Applications

The EH-DP dumper is designed to lift large, bulky loads from floor level and dump them at a fixed height onto conveyors or into reception vessels. The units are ergonomically engineered to unload component parts from carrying containers and deposit them at the optimum work height to reduce worker bending and lifting.

### Reliable Design, Rugged Construction

All Pflow products are ruggedly constructed for long, trouble free service. Frames are structural steel and dumping platforms are heavy gauge sheet steel. Adjustable hold down clamps are provided to accommodate a variety of container sizes in the 48" x 48" x 42" load platform. Capacities range from 1,000 to 10,000 lbs. The standard dumper is a stationary model, but is also available as a semi-portable version with the addition of two wheels and a pull over jack.

### Dumping Heights

range from 36" to 60" at 135 degree rotation. To raise the maximum dump height, the base must be installed on an elevated support platform. This however will raise the lowered position of the platform from floor level and lift truck loading will be required. Rotations up to 180 degrees may be specified.

### Hydraulic System

The EH-DP is a double piston model using hydraulic power units specially designed and built by Pflow Industries. Heavy duty, single acting, plunger type cylinders with no internal seals make maintenance easier. Since all the seals are external, the cylinder can be serviced right in the dumper. The ram casing is pin mounted to permit self alignment, reducing side strain and minimizing unbalanced packing wear. A bronze gland nut provides for external packing adjustment. Packing sets are designed to adequately handle the full range of pressures and to provide long wear with excellent leak proof qualities.

### Controls

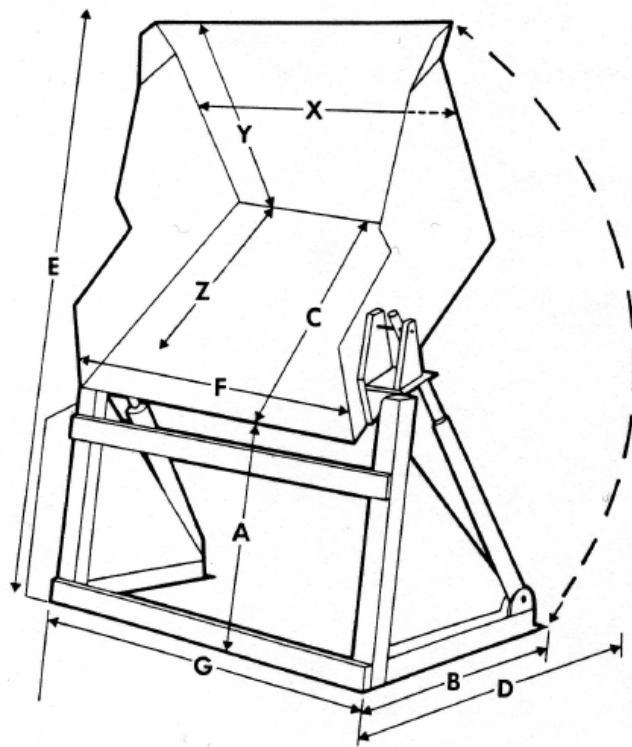
Standard controls are pushbutton deadman switches, to dump and to lower. Other combinations or special controls for hazardous locations may be specified.

### Power

Standard power is a 220 V or 440 V, 3 Phase, 60 Hz motor.

### Safety Features

All electrical motors and controls are UL listed. Controls meet NEMA enclosure codes for the appropriate operating environment such as dust, oil, indoor or outdoor use. Control enclosures can be supplied in stainless or fiberglass materials for food or chemical applications. Explosion proof enclosures meeting NEMA codes are also available. Special expanded metal side guards may be installed around stationary models to protect the operator during dumping procedures.



Capacity	A Dump Height	B Overall Length	C Collapsed Height	D Swing Length	E Overall Height Extended	G Overall Width With Power Unit
2,000	36"	52 1/4"	52 1/4"	66"	107"	77"
4,000	48"	52 1/4"	64 1/4"	76"	128"	77"
6,000	60"	52 1/4"	76 1/4"	85"	148"	77"
8,000 to	36"	53 1/2"	52 3/8"	68"	107"	81"
	48"	53 1/2"	64 3/8"	76"	128"	81"
10,000	60"	53 1/2"	76 3/8"	85"	148"	81"

F (carriage width) = 52" X (load width), Y (load length) = 48" Z (load height) = 36"  
Note : Carriage reach at 135 degree rotation will be 6" as standard.

Phone: 414-352-9000

[www.pflow.com](http://www.pflow.com)

[www.langleymfg.com](http://www.langleymfg.com)

### EH -DP Portable Box Dumpers

